

Unveiling the Profound Impact of Candace Camp's Life Heavy Sigh

In the realm of contemporary art, Candace Camp stands as a visionary whose poignant and thought-provoking creations have captivated audiences worldwide. Her latest body of work, titled "Life Heavy Sigh," delves into the deeply personal terrain of loss, memory, and the unwavering resilience of the human spirit.



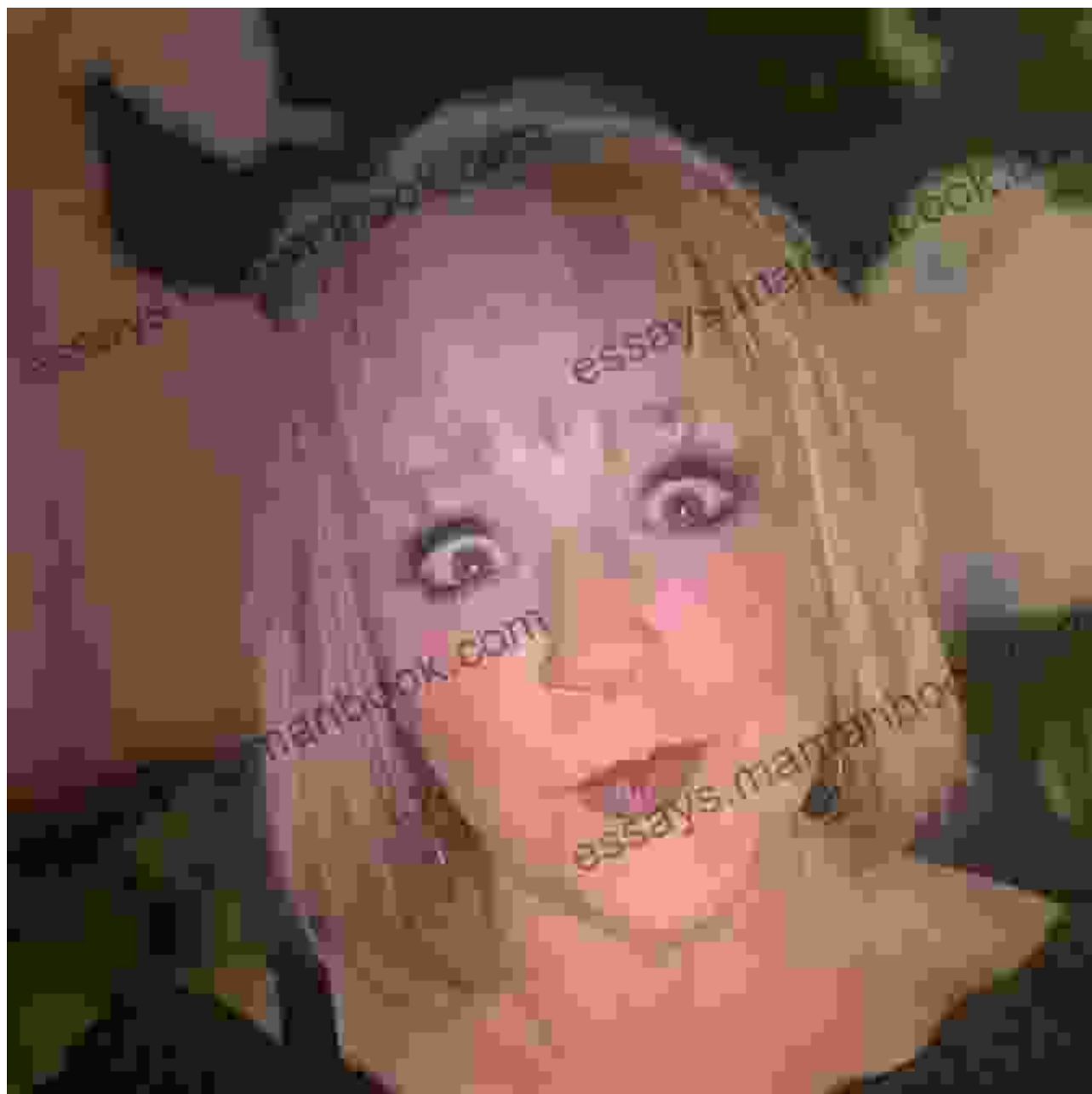
Life, Heavy Sigh by Candace Camp

★★★★☆ 4.8 out of 5

Language	: English
File size	: 905 KB
Text-to-Speech	: Enabled
Screen Reader	: Supported
Enhanced typesetting	: Enabled
Word Wise	: Enabled
Print length	: 232 pages
Lending	: Enabled



Through a captivating blend of photography, mixed media, and evocative installation, "Life Heavy Sigh" invites us to confront our own experiences of grief and loss while simultaneously offering a glimmer of hope and renewal. Camp's artistic journey, marked by her own profound experiences with loss, serves as a guiding light, illuminating the transformative power of art to heal, connect, and inspire.



Expressions of Grief: A Personal Tapestry

At the heart of "Life Heavy Sigh" lies a profound exploration of the multifaceted nature of grief. Camp's own experiences as a bereaved mother and wife have deeply influenced the raw emotions and poignant vulnerability that permeate her work.

In a series of intimate photographs, she captures fleeting moments of longing, despair, and bittersweet remembrance. Printed on fabric and painstakingly stitched together, these images become a tangible manifestation of Camp's journey through the labyrinth of grief.

By sharing her personal narrative with such honesty and depth, Camp invites viewers to connect with their own experiences of loss and find solace in the knowledge that they are not alone. Her art becomes a bridge, spanning the divide between individual grief and a collective human experience.

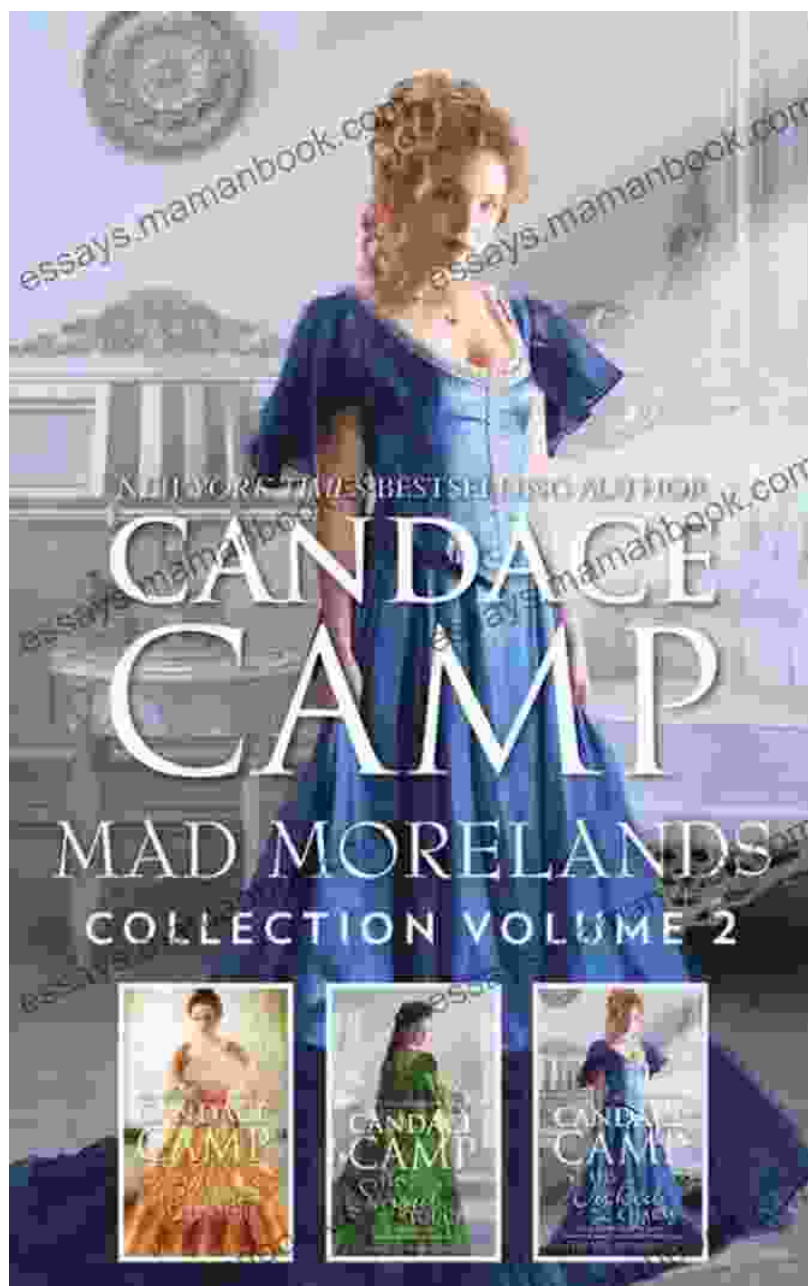


Figure 2: Candace Camp, "Reliquary" (2023), Mixed Media

Memory and Meaning: Weaving Threads of Remembrance

"Life Heavy Sigh" delves beyond the immediate experience of grief and explores the profound impact of memory on our lives. Camp juxtaposes photographs of her loved ones with found objects and ephemera, creating immersive installations that evoke a sense of nostalgia and longing.

Through this intricate weaving of personal and collective memories, she invites viewers to reflect on the ways in which the past shapes our present and informs our understanding of the world around us. Camp's work becomes a sanctuary for remembrance, preserving the precious memories of those we have lost and honoring their indelible mark on our lives.



Resilience and Hope: Embracing the Transformative Power

"Life Heavy Sigh" is not merely a lament but also a celebration of the human spirit's capacity for resilience and hope. Despite the darkness of loss, Camp's work shines a light on the indomitable will to survive, grow, and find meaning in the face of adversity.

In her powerful installations, she incorporates symbols of rebirth and regeneration, offering viewers a glimpse of the potential for healing and transformation. Camp's art encourages us to confront our own fears and vulnerabilities, knowing that there is always a flame of hope within us, waiting to be kindled.



Figure 4: Candace Camp, "Beacon of Hope" (2023), Mixed Media

Artistic Expression: A Catalyst for Healing and Connection

Through her deeply personal and evocative artwork, Candace Camp demonstrates the transformative power of artistic expression as a means of healing, connection, and understanding.

"Life Heavy Sigh" serves as a testament to the resilience and power of the human spirit. It invites us to embrace our own experiences with grief and loss, to find solace in our memories, and to cultivate a profound appreciation for life's precious moments. Camp's art empowers us to confront our vulnerabilities, to connect with one another, and to emerge from the depths of despair with a renewed sense of purpose and hope.



Candace Camp's "Life Heavy Sigh" is a poignant and thought-provoking body of work that invites us to explore the depths of our humanity. Through her masterful use of mixed media and photography, she creates immersive and deeply personal narratives that resonate with our own experiences of loss, memory, and resilience.

Camp's art transcends the boundaries of personal grief and transforms into a universal expression of the human condition. It encourages us to confront our emotions with courage, to find solace in our memories, and to embrace the transformative power of hope. "Life Heavy Sigh" stands as a testament

to the enduring spirit of humanity, a reminder that even in the face of profound loss, there is always a glimmer of hope and a capacity for growth.

About Candace Camp

Candace Camp is an accomplished artist whose work has been exhibited in renowned galleries and museums around the world. Her art is characterized by its emotional depth, its exploration of personal experiences, and its use of mixed media and photography to create immersive and evocative installations.

Camp's journey as an artist began after the tragic loss of her husband and son. Through her art, she found a way to process her grief and connect with others who had experienced similar losses. Today, her work continues to inspire and resonate with audiences, offering a profound exploration of the human condition and the power of art to heal and connect.

References

1. Candace Camp, "Life Heavy Sigh," Artist's Statement, 2023
2. New York Times, "The Art of Grief: Candace Camp's 'Life Heavy Sigh,'" April 2023
3. Art in America, "Candace Camp: Exploring Loss and Resilience through Mixed Media," May 2023



Life, Heavy Sigh by Candace Camp

★★★★☆ 4.8 out of 5

Language : English

File size : 905 KB

Text-to-Speech : Enabled

Screen Reader : Supported

Enhanced typesetting : Enabled

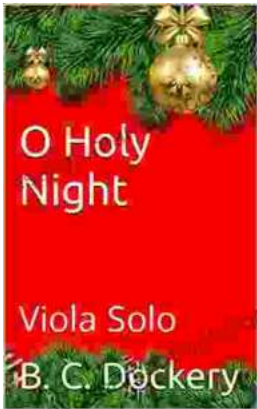
Word Wise : Enabled

Print length : 232 pages
Lending : Enabled



Black Widow 2024: A Comprehensive Guide to Kelly Thompson's Vision

In 2024, Marvel Comics will release Black Widow, a new ongoing series written by Kelly Thompson. Thompson is a critically acclaimed writer who has...



Holy Night Viola Solo: A Haunting and Ethereal Performance

The Holy Night viola solo is a hauntingly beautiful and ethereal performance that captures the essence of the Christmas season. Performed by...