

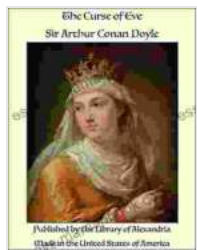
# The Curse of Eve: Unravelling the Profound Symbolism in Nicola Jane's Captivating Work



## : Delving into the Enigmatic Realms of Nicola Jane's Art

Nicola Jane, a renowned British artist, has captivated art enthusiasts worldwide with her haunting and provocative paintings that explore the

complexities of the human experience. Among her most celebrated works is "The Curse of Eve," a mesmerizing portrayal of the iconic biblical figure that resonates with timeless symbolism and profound insights into human nature. In this article, we embark on a journey to unravel the intricate tapestry of meaning woven within Jane's masterpiece, delving into its artistic techniques, biblical context, and broader cultural implications.



## The Curse of Eve by Nicola Jane

★★★★★ 5 out of 5

Language : English  
File size : 1016 KB  
Text-to-Speech : Enabled  
Enhanced typesetting : Enabled  
Word Wise : Enabled  
Print length : 16 pages  
Lending : Enabled  
Screen Reader : Supported



### Artistic Analysis: A Tapestry of Symbolism and Visual Allure

Jane's "The Curse of Eve" is a mesmerizing spectacle of color, light, and captivating detail. The painting portrays Eve in a lush, dreamlike setting, shrouded in an ethereal mist that lends an air of mystery and enchantment. The focal point of the composition is the serpent, its body coiled around the Tree of Knowledge, its eyes gleaming with an enigmatic allure. Eve, seated nearby, gazes at the serpent with a mixture of curiosity and trepidation.

Jane's skillful brushwork masterfully captures the textures and surfaces of the scene, from Eve's flowing hair to the intricate scales of the serpent. The use of light and shadow creates a dramatic effect, highlighting the serpent's

seductive presence and Eve's innocence and vulnerability at the moment of temptation. The painting exudes an otherworldly atmosphere, inviting viewers to become immersed in its captivating narrative.

### **Biblical Context: Revisiting the Origins of Eve's Curse**

The figure of Eve holds a central place in the biblical narrative of creation and the fall of humanity. According to the story in the book of Genesis, Eve was created by God as a companion for Adam, the first man. However, she succumbed to the serpent's temptation and ate the forbidden fruit from the Tree of Knowledge, leading to the expulsion of both Adam and Eve from the Garden of Eden.

Jane's painting draws on this biblical tale to explore the broader themes of temptation, disobedience, and the consequences of human actions. Through her depiction of Eve, Jane invites us to contemplate the complexities of human nature, the allure of forbidden knowledge, and the enduring legacy of our choices.

### **Cultural Significance: Women, Sexuality, and the Power of Choice**

Beyond its biblical references, "The Curse of Eve" resonates with profound cultural significance, particularly in its exploration of women, sexuality, and the power of choice. Throughout history, Eve has often been portrayed as the temptress who led Adam astray, perpetuating a negative stereotype of women as weak-willed and responsible for the downfall of humankind.

Jane's painting challenges this traditional narrative, offering a more nuanced and compassionate perspective on Eve's actions. By depicting Eve as both victim and agent of her own destiny, Jane invites us to reconsider the complex factors influencing human decision-making. Her

work encourages us to grapple with the complexities of female identity, the pressures faced by women in patriarchal societies, and the inherent power of choice that all humans possess.

### **Contemporary Interpretations: Reimagining the Eve Archetype**

In contemporary times, "The Curse of Eve" continues to inspire and provoke new interpretations, particularly within feminist and postcolonial discourses. Some scholars have reinterpreted Eve as a symbol of rebellion against oppressive structures, while others view her as a representation of the strength and resilience of women in the face of adversity.

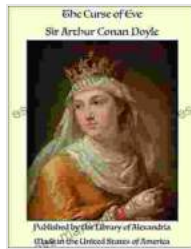
Jane's painting provides a platform for ongoing exploration and dialogue, encouraging viewers to engage with the enduring themes of the Eve archetype through a contemporary lens. It invites us to question traditional gender roles, examine the power dynamics within relationships, and consider the broader implications of human agency and responsibility.

### **: A Timeless Masterpiece Resonating with Past, Present, and Future**

Nicola Jane's "The Curse of Eve" is not merely a captivating artwork but a multifaceted exploration of human nature, biblical narratives, and cultural archetypes. Through her skillful artistry and profound symbolism, Jane invites viewers to delve into the complexities of temptation, choice, and the enduring legacy of human experiences.

As a timeless masterpiece, "The Curse of Eve" continues to inspire and provoke, offering new insights and perspectives across generations. It challenges traditional narratives, encourages critical reflection, and empowers viewers to forge their own understanding of the human condition. Nicola Jane's work stands as a testament to the transformative

power of art, inviting us to engage with profound themes and explore the myriad facets of our shared humanity.



## The Curse of Eve by Nicola Jane

★★★★★ 5 out of 5

Language : English  
File size : 1016 KB  
Text-to-Speech : Enabled  
Enhanced typesetting : Enabled  
Word Wise : Enabled  
Print length : 16 pages  
Lending : Enabled  
Screen Reader : Supported

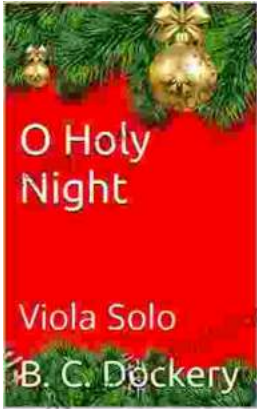
FREE

DOWNLOAD E-BOOK



## Black Widow 2024: A Comprehensive Guide to Kelly Thompson's Vision

In 2024, Marvel Comics will release Black Widow, a new ongoing series written by Kelly Thompson. Thompson is a critically acclaimed writer who has...



## Holy Night Viola Solo: A Haunting and Ethereal Performance

The Holy Night viola solo is a hauntingly beautiful and ethereal performance that captures the essence of the Christmas season.

Performed by...